

# Monitoring Ireland's Skills Supply

## Trends in Education and Training Outputs

July 2013

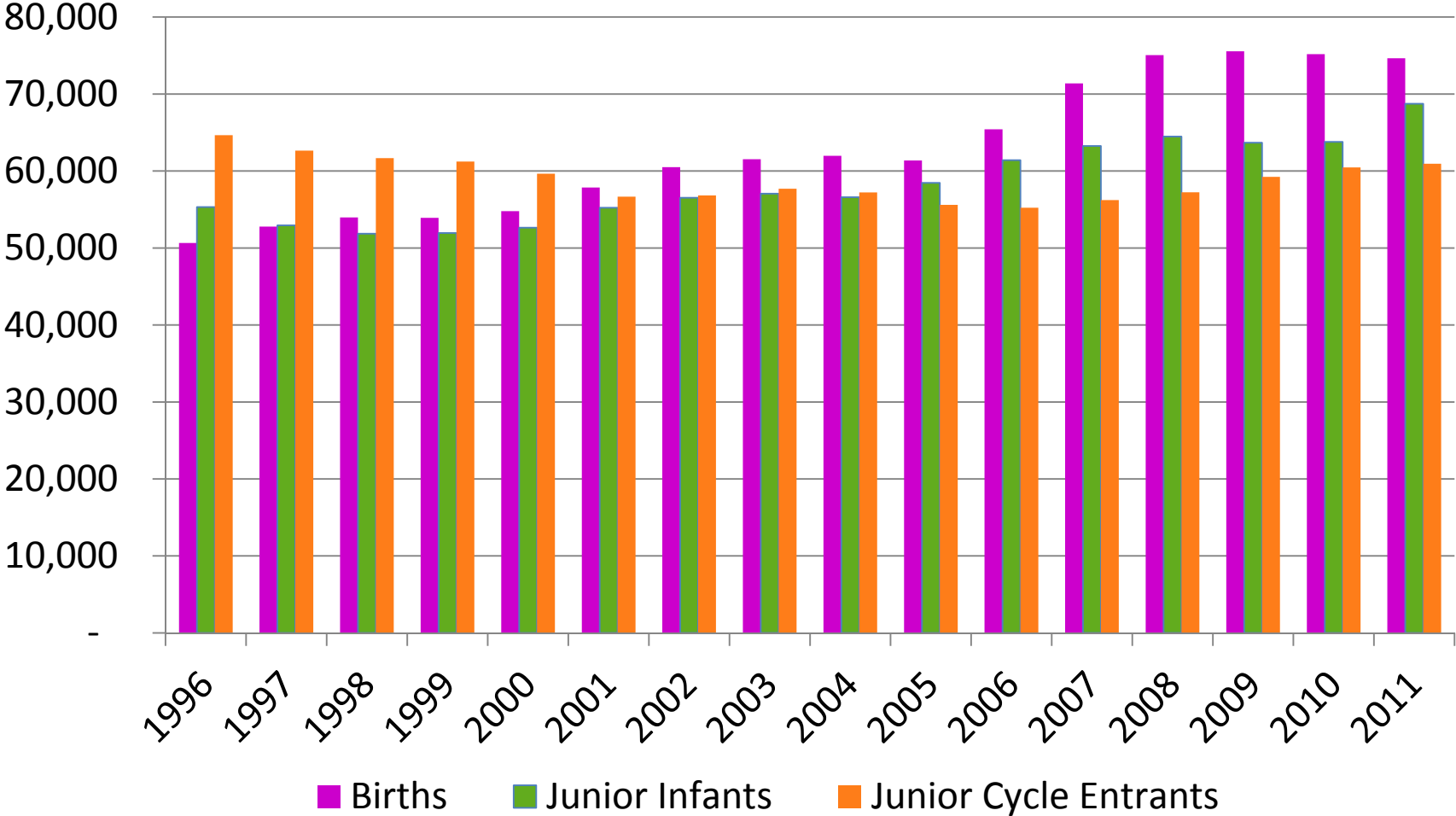
# Monitoring Ireland's Skills Supply



## Objective:

To provide an overview of the supply of skills to the labour market from the formal education system (NFQ Levels 1-10)

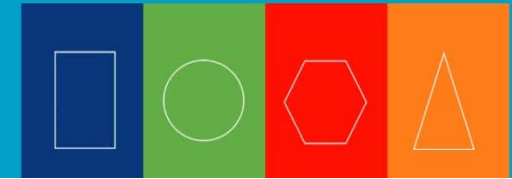
# Inflows



Data on births refers to calendar year; junior infant & junior cycle data refers to academic year

Source: CSO; DES

# Awards in 2012\*



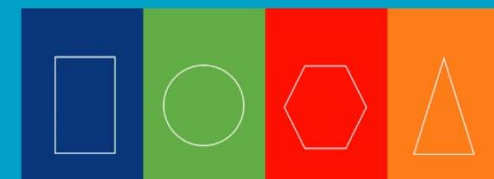
|                    | NFQ 1-2 | NFQ 3  | NFQ 4  | NFQ 5  | NFQ 6  | NFQ 7 | NFQ 8  | NFQ 9/10 | Total   |
|--------------------|---------|--------|--------|--------|--------|-------|--------|----------|---------|
| Junior Cert        | -       | 59,000 | -      | -      | -      | -     | -      | -        | 59,000  |
| Leaving Cert       | -       | -      | 56,000 |        | -      | -     | -      | -        | 56,000  |
| QQI- FETAC (Major) | 980     | 1,080  | 2,250  | 26,670 | 11,620 | -     | -      | -        | 42,600  |
| IoTs               | -       | -      | -      | -      | 2,940  | 7,700 | 9,660  | 2,320    | 22,620  |
| Universities       | -       | -      | -      | -      | 1,650  | 1,750 | 17,710 | 15,330   | 36,440  |
| Total              | 980     | 60,080 | 84,920 |        | 16,210 | 9,450 | 27,370 | 17,650   | 216,660 |

Source: State Examinations Commission; Higher Education Authority (HEA); QQI

\* Higher education awards are for 2011

- An overall increase of approx. 6,000 awards (3%) since 2011
- Increases at all NFQ levels except level 3 (- 350 awards) and levels 9/10 (-470 awards) compared to previous year

# Further and Higher Education Awards in 2012\* (by Field)

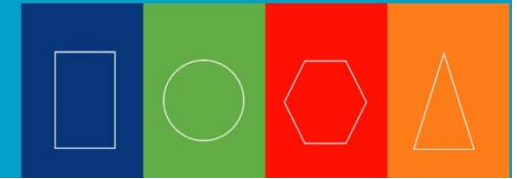


| Field                      | NFQ 1-2    | NFQ 3        | NFQ 4        | NFQ 5         | NFQ 6         | NFQ 7        | NFQ 8         | NFQ 9/10      | Total          |
|----------------------------|------------|--------------|--------------|---------------|---------------|--------------|---------------|---------------|----------------|
| General                    | 980        | 830          | 1,680        | 110           | 150           | -            | -             | 40            | 3,790          |
| Education                  | -          | -            | -            | 10            | 30            | 30           | 1,810         | 3,010         | 4,890          |
| Humanities & Arts          | -          | -            | 10           | 2,970         | 760           | 930          | 5,350         | 2,250         | 12,270         |
| Social Science, Bus. & Law | -          | 250          | 280          | 5,470         | 2,220         | 2,480        | 7,900         | 5,940         | 24,540         |
| Science & Computing        | -          | -            | -            | 900           | 690           | 1,000        | 3,580         | 2,160         | 8,330          |
| Engineering & Construction | -          | -            | 40           | 580           | 4,040         | 2,320        | 3,100         | 1,120         | 11,200         |
| Agriculture & Veterinary   | -          | -            | 110          | 1,560         | 1,470         | 300          | 300           | 50            | 3,790          |
| Health & Welfare           | -          | -            | 20           | 12,570        | 5,270         | 1,370        | 4,600         | 2,740         | 26,570         |
| Services                   | -          | -            | 120          | 2,500         | 1,600         | 1,030        | 730           | 330           | 6,310          |
| <b>Total</b>               | <b>980</b> | <b>1,080</b> | <b>2,250</b> | <b>26,670</b> | <b>16,210</b> | <b>9,450</b> | <b>27,370</b> | <b>17,650</b> | <b>101,660</b> |

Source: Higher Education Authority (HEA); QQI

\* Higher education awards are for 2011; FET awards include major awards only

# QQI FET Awards 2012 by Award Type

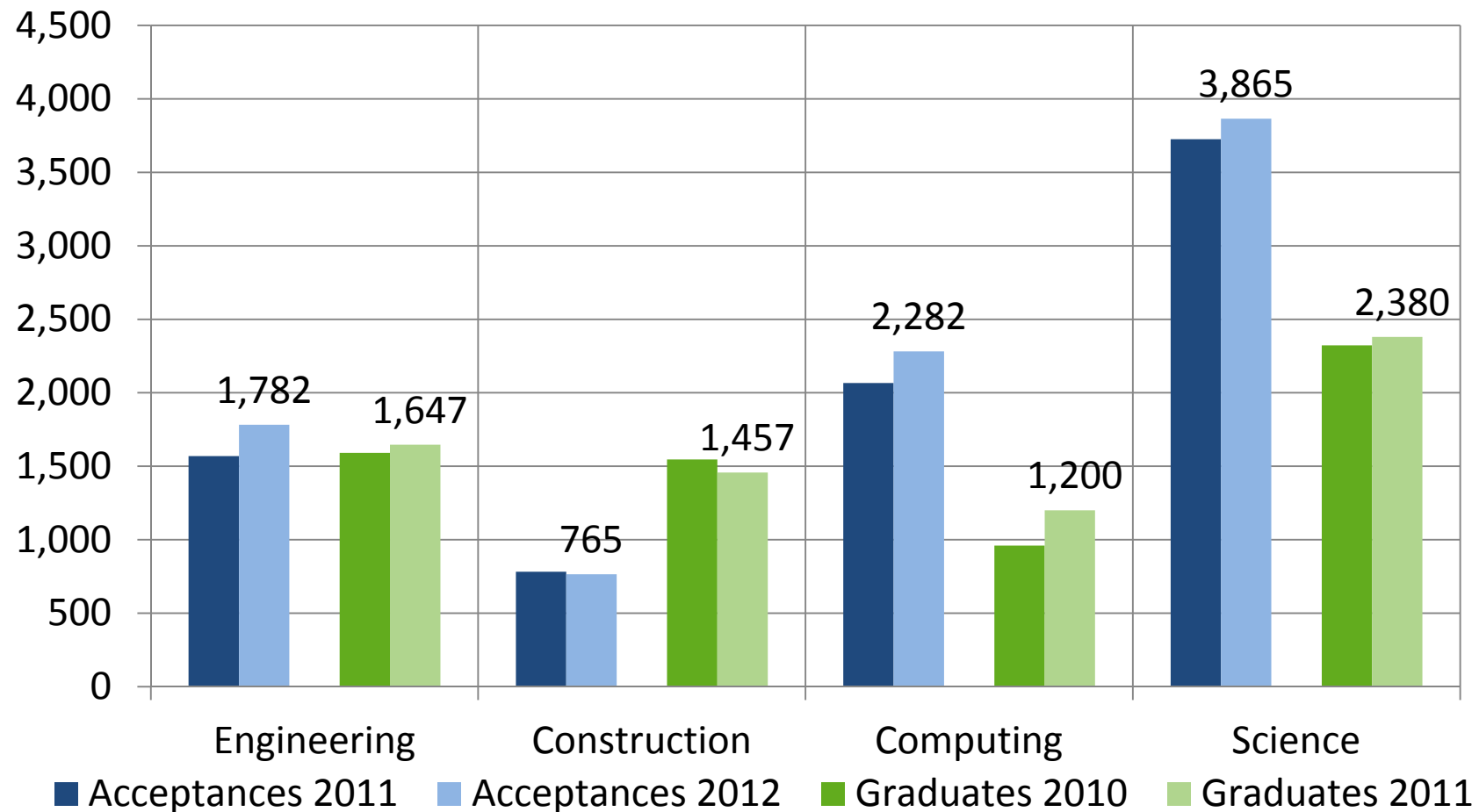
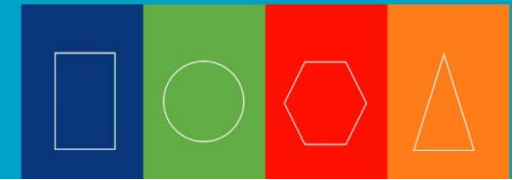


| Award Type                 | Award Holders   | Awards         | Awards change 2011-2012 |
|----------------------------|-----------------|----------------|-------------------------|
| Certificates (Major)       | 42,593          | 42,593         | 13%                     |
| Component (Minor)          | 122,876         | 240,094        | -16%                    |
| Specific (Special) Purpose | 15,134          | 15,134         | 40%                     |
| Supplemental               | 730             | 730            | -23%                    |
| <b>Total</b>               | <b>170,136*</b> | <b>298,551</b> | <b>-11%</b>             |

Source: QQI

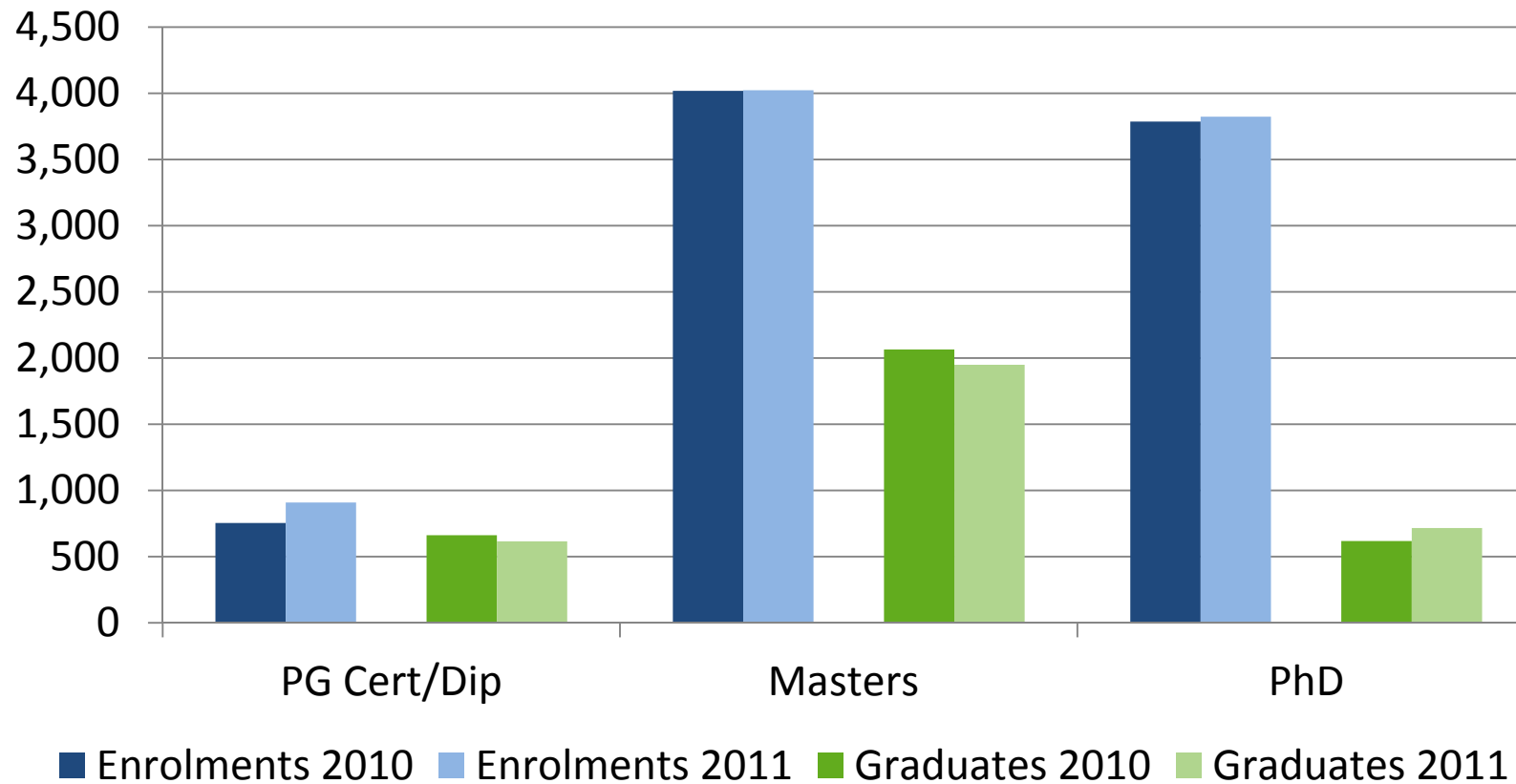
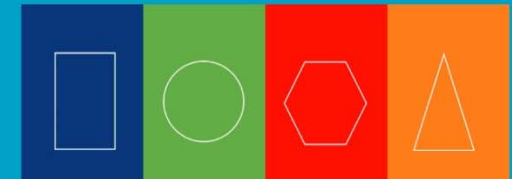
\* The number of award holders does not sum up as some candidates may obtain more than one award type

# Higher Education Science & Technology – NFQ 8 (Inflows & Outflows)



Source: CAO; HEA

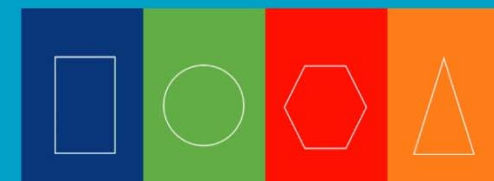
# Higher Education Science & Technology – NFQ 9/10



Source: HEA



# Outgoing ERASMUS students from Ireland by Destination Country



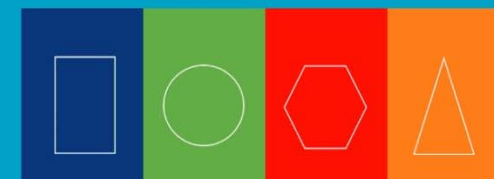
| Destination Country | 2010/11*     |
|---------------------|--------------|
| France              | 649          |
| Spain               | 451          |
| UK                  | 349          |
| Germany & Austria   | 329          |
| Netherlands         | 144          |
| Sweden              | 115          |
| Italy               | 74           |
| Others**            | 400          |
| <b>Total</b>        | <b>2,511</b> |

Source: European Commission

\*Numbers include students going abroad to higher education institutions and on work placements.

\*\*Includes: Other EU countries as well as Iceland, Liechtenstein, Norway, Croatia, and Turkey.

# Economic Status of 25-29 Year-Olds by Education Attainment, Q4 2012

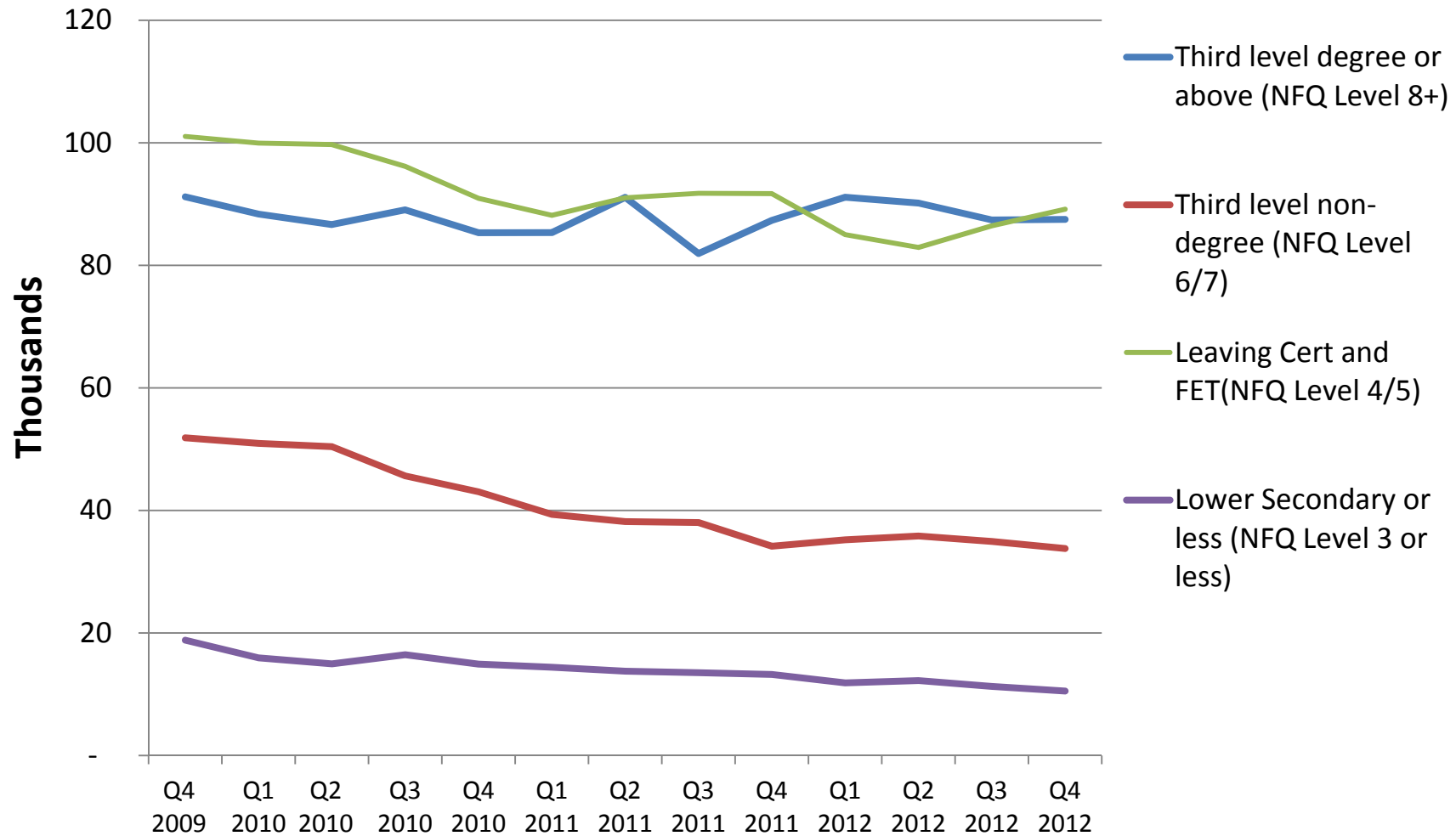
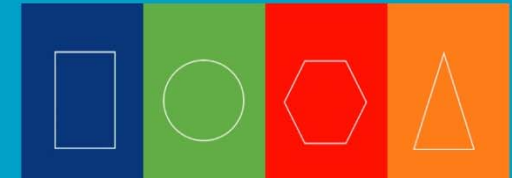


|   | Q4 2012       |            |            |             |
|---|---------------|------------|------------|-------------|
|   | In Employment | Unemployed | Not Active | Total       |
| Third level degree or above (NFQ Level 8+)    | 82%           | 6%         | 12%        | 100%        |
| Third level non-degree (NFQ Level 6/7)        | 76%           | 9%         | 14%        | 100%        |
| Leaving Cert and FET (NFQ Level 4/5)          | 66%           | 16%        | 18%        | 100%        |
| Lower Secondary or less (NFQ Level 3 or less) | 31%           | 26%        | 43%        | 100%        |
| <b>Total</b>                                  | <b>69%</b>    | <b>13%</b> | <b>18%</b> | <b>100%</b> |

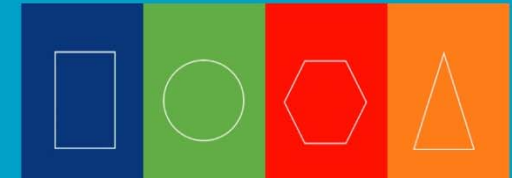
Source: FÁS (SLMRU) analysis of CSO (QNHS) data

- 106,500 level 8+ graduates aged 25-29 (Q4 2012) – a 1% decline on Q4 2009
- Level 8+ graduates more likely to be in employment than all other categories
- Level 8+ graduates were also less likely to be unemployed

# Persons in Employment Aged 25-29 by Education Attainment, Q4 2009 - Q4 2012



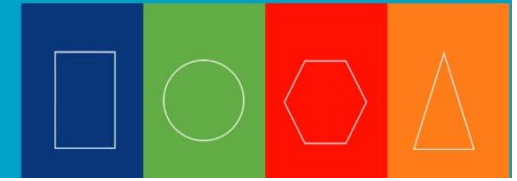
## Recent Graduates (NFQ 8-10) aged 25-29 – Field of learning



- Of those aged 25-29 years,
  - graduates from the education discipline and the health and welfare field were most likely to be in employment (93% and 90% respectively)
  - graduates with education qualifications were most likely to work in a field related to their qualification (at 88%), while only 39% of those with science, maths and computing qualifications worked in a related field

Note: the field of learning refers to that of the highest qualification attained and as such may mask a person's primary degree i.e. a **commerce** student (**social science, business & law category**) may go on to attain a postgraduate qualification in education and would therefore be captured in the **Education field of learning** rather than in the field of his/her primary degree.

# Formal Education: the Adult Population

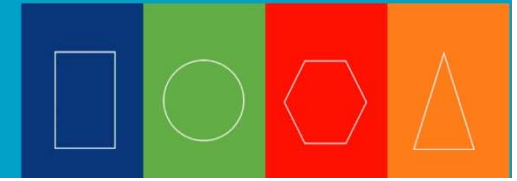


- An estimate of the extent to which the adult population had recently engaged in formal education activities (CSO QNHS)
- People who
  - stated they had engaged in **formal\*** education and training in the four weeks prior to the survey
  - were aged **25 years** and over

**\*Formal education** refers to education and training that typically takes place in schools, colleges and universities. Formal education is structured around one or more of the following features: the purpose and format are predetermined; it normally constitutes a continuous ladder of education; there are clearly defined learning objectives and learning time; it is normally intended to lead to certification or a nationally/internationally/professionally recognised award.

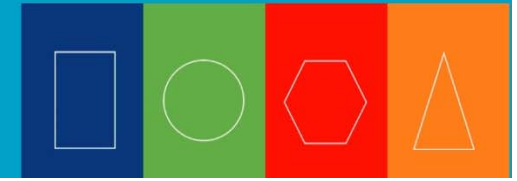
**Non-formal education** refers to all organised learning activities outside regular or formal education (e.g. courses or seminars intended to improve job-related knowledge or courses intended to improve skills for social and personal purposes, such as grinds, music lessons, driving lessons, etc.); courses may or may not lead to certification.

## Formal Education (adults aged 25+), Quarter 4 2012

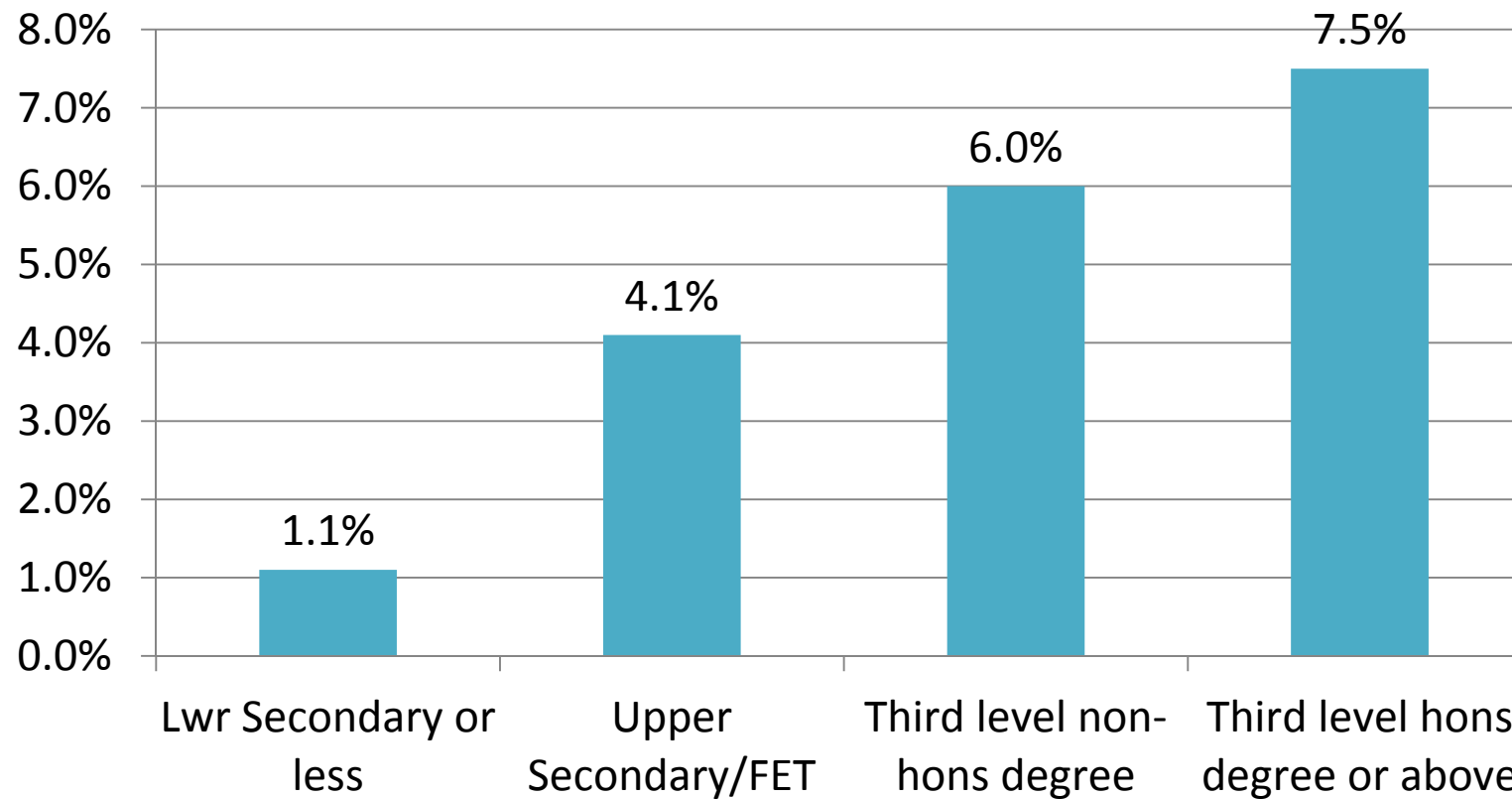


- Approximately 127,000 participated in formal education activities (4% of adult population)
- Almost a fifth more when compared to Q4 2007 (or an additional 20,500 learners)
- Participants were comprised almost equally of those
  - in employment (58,000 persons, of which 40,000 were in full-time employment)
  - economically inactive (59,000 persons)
  - combined they made up 91% of the total
- Almost three quarters were participating in **third level education programmes**, one third of which were in the field of social science, business and law

# Formal Education Participation Rate (%) by Education Attainment, Q4 2012



The higher the level of education attainment, the greater the likelihood of participating in formal education activities



Source: FÁS (SLMRU) analysis of CSO (QNHS) data