

County Employment Overview

July 2017

Table of Contents

	Page no.
1. Introduction	3
2. Employment and Unemployment by Region, 2016 and Q1 2017	5
3. Employment and Unemployment by County, 2011 & 2016	7
Carlow	8
Cavan	9
Clare	10
Cork	11
Donegal	12
Dublin	13
Galway	14
Kerry	15
Kildare	16
Kilkenny	17
Laois	18
Leitrim	19
Limerick	20
Longford	21
Louth	22
Mayo	23
Meath	24
Monaghan	25
Offaly	26
Roscommon	27
Sligo	28
Tipperary	29
Waterford	30
Westmeath	31
Wexford	32
Wicklow	33
Appendix 1. Summary Tables of Employment and Unemployment by County	34

1.0 Introduction

This overview report presents summary employment and unemployment performance data, by county, for the years 2011 and 2016 and the percentage changes over the period.

Government is supporting Jobs Growth in all Counties

The Programme for a Partnership Government set an ambitious target to support an additional 200,000 at work by 2020, with 135,000 of those new jobs outside Dublin.

The Government's commitment to countrywide job creation is bearing fruit. In 2016, despite a challenging environment for FDI, every region posted net job gains. An additional 66,100 jobs were created in the economy overall during 2016, well in excess of the Government's Action Plan for Jobs 2016 target of 50,000 new jobs. For the economy overall, 70% of the new jobs added in 2016, or 46,270 jobs were outside the Dublin Region.

Employment growth outside Dublin was at a faster rate in the year to the end of March 2017 compared with the growth rate in Dublin; employment outside Dublin increased by 3.9%, while employment in Dublin increased by 2.5%.

Employment in firms supported by the Department of Business, Enterprise and Innovation through its agencies Enterprise Ireland, IDA Ireland and the Local Enterprise Offices, in addition to employment supported by Údarás na Gaeltachta, grew by an additional 45,754 gross new jobs in 2016, with 60% of these outside Dublin and 55% outside Dublin and the Mid-East. Collectively the agencies EI and IDA Ireland and Údarás supported the creation of almost 28,000 of these jobs outside Dublin in 2016.

Strong employment growth continuing in 2017

Last year's strong performance has been mirrored so far this year, with Q1 2017 providing us with some additional interesting statistics, as set out in Section 2, including:

- Over 77% of the new jobs added in the year to Q1 2017 were outside Dublin
- Employment increased in 7 of the 8 regions in the year to Q1 2017, with a small decrease in the Border (-300 jobs)
- The fastest growing regions in terms of employment in the past year were the West (up 10.4%), the Mid East (up 5.3%), and the South East (up +4.8%)
- The unemployment rate fell in all regions in the year to Q1 2017
- The Mid East had the lowest unemployment rate (5% in Q1 2017), followed by the South West (5.9%), and Dublin (6.3%)
- Following from the success of 2016's Community Enterprise and LEO Competitive Funds, through which 48 projects across the country were awarded funding, the Department of Business, Enterprise and Innovation and Enterprise Ireland

recently launched (May 2017) a further regional funding initiative of up to €60m to support collaborative approaches to grow and sustain jobs across all regions.

Data Sources and Methodology

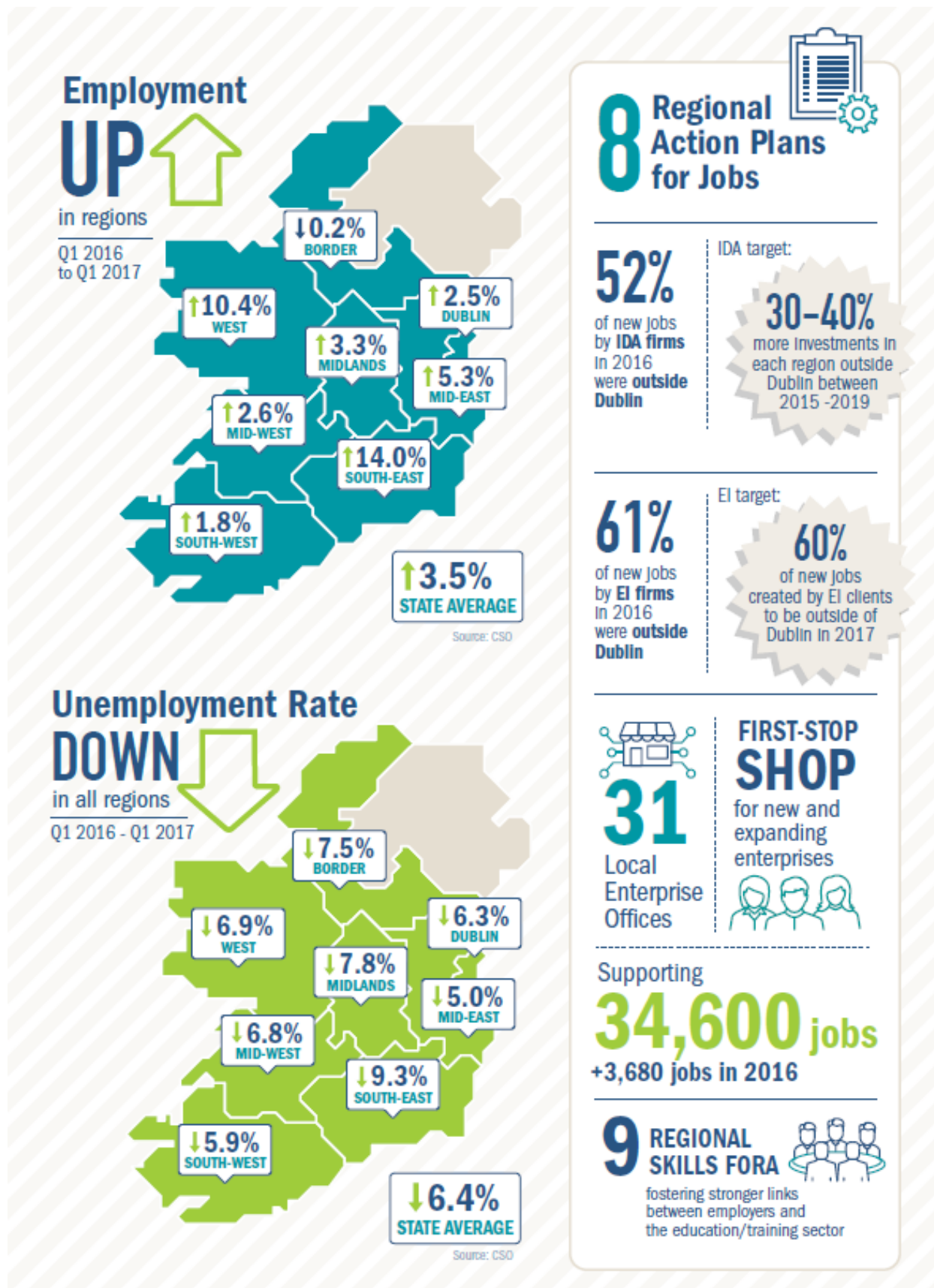
The county data for Total Employment and numbers Unemployed is from the **CSO Census of Population for 2011 and for 2016**, as the QNHS data, which is used for monitoring national employment and unemployment levels, is not available at county level. The QNHS is the official and internationally compatible means of measurement, based on International Labour Organisation (ILO) definitions and is used by Eurostat. The QNHS however is a sample survey and data is not available by county. Similarly, it is important to note that the definitions used in the Census and QNHS are different and numbers unemployed are therefore not comparable. The CSO Census data is based on the definition of 'Principal Economic Status' and is not directly comparable with the Quarterly National Household Survey (QNHS) or the Live Register. The CSO Census uses a broad definition of unemployment, based on Principal Economic Status, including 'having given up or lost previous job' and also 'looking for first job', while the QNHS has a more precise definition of unemployed "*...as a person who was without work in the preceding week and was available for work in the next two weeks and has taken specific steps in the preceding four weeks to find work*". Hence differences may occur between the QNHS and Census figures. In the most recent Census publication, while the numbers in employment are broadly similar, the number unemployed is higher for 2016 than as reported in the QNHS.

The data relating to the agency assisted firms supported by Enterprise Ireland, IDA Ireland and Údarás na Gaeltachta is from the **Annual Employment Survey undertaken by the Department of Business, Enterprise and Innovation**, and previously by Forfás. The data combines full and part-time/other jobs in the agency assisted firms and includes agency-assisted firms, but precludes certain sectors from its population, e.g. retail and construction.

The data for employment in firms that are clients of the Local Enterprise Offices (LEOs) in 2016 is drawn from the **LEO Annual Employment Survey**. The survey instrument was redesigned and rebased in 2015, so comparable data for 2011 is not available, rather the employment for LEO clients of 2016 only is presented. The change in employment for those companies included in the Survey in 2016 is also set out, but this does not take account of firms transferred into out of the survey population from 2015, e.g., transferred to EI.

For any further information, please contact the Strategic Policy Division in the Department of Business, Enterprise and Innovation: matthew.mcdonagh@djei.ie

2.0. Employment by Region, 2016 and Q1 2017



Unemployment Rate falling in all regions

The CSO QNHS for the first quarter of 2017 indicates that the unemployment rate fell in all regions in the year to Q1 2017.

The Mid-East had the lowest unemployment rate (5.0 per cent in Q1 2017), followed by the South-West (5.9 per cent) and Dublin (6.3 per cent).

Unemployment rate by region	Q1 2016 %	Q1 2017 %
Mid-East	5.9	5.0
South-West	7.7	5.9
Dublin	6.9	6.3
State	8.4	6.7
Mid-West	7.9	6.8
West	10.2	6.9
Border	8.6	7.5
Midlands	11.6	7.8
South-East	12.5	9.3

Employment as recorded by the CSO QNHS increased in seven of the eight regions in the year to Q1 2017, with a small drop in the Border (down 300 jobs)¹.

Over 77 per cent of the new jobs added in the year to Q1 2017 were outside Dublin.

The fastest growing regions in terms of employment in the past year were the West (up 10.4 per cent), the Mid-East (up 5.3 per cent) and the South-East (up 4.8 per cent).

In employment by region	Q1 2016 (000s)	Q1 2017 (000s)	Annual % change
West	176.6	194.9	10.4%
Mid-East	231.4	243.6	5.3%
South-East	204.4	214.3	4.8%
Midlands	117.4	121.3	3.3%
Mid-West	153.9	157.9	2.6%
Dublin	611.7	627.2	2.5%
South-West	285.4	290.5	1.8%
Border	195.7	195.4	-0.2%
State	1,976.5	2,045.1	+3.5%
<i>Outside Dublin</i>	<i>1,364.8</i>	<i>1,417.9</i>	<i>+3.9%</i>

¹ This is based on seasonally unadjusted data

Employment and Unemployment by County 2011 & 2016

Carlow

Table 1. Total at Work, 2011 & 2016

	2011	2016	Change 2011-2016	% Change
Carlow	19,502	21,973	2,471	+13%

Source: CSO Census of Population 2011 & 2016

Table 2. Unemployed, 2011 & 2016

	2011	2016	Change 2011-2016	% Change
Carlow	5,908	4,507	-1,401	-24%

Source: CSO Census of Population 2011 & 2016

Table 3. Total Employed in Enterprise Ireland, IDA Ireland supported Firms, 2011 & 2016

		2011	2016	Change 2011-2016	% Change
Foreign Owned	Carlow	514	802	288	+56%
Irish Owned	Carlow	2,702	2,813	111	+4%
Total	Carlow	3,216	3,615	399	+12%

Source: DJEI/Forfás Annual Employment Survey

Table 4. Local Enterprise Office supported Employment, 2016

	Total Employment	Change in Employment 2015-2016	% Change in Employment 2015-2016
Carlow	1,092	63	+6%

Source: Local Enterprise Offices Annual Employment Survey 2016

Cavan

Table 1. Total at Work, 2011 & 2016

	2011	2016	Change 2011-2016	% Change
Cavan	27,309	30,509	3,200	+12%

Source: CSO Census of Population 2011 & 2016

Table 2. Unemployed, 2011 & 2016

	2011	2016	Change 2011-2016	% Change
Cavan	7,331	5,413	-1,918	-26%

Source: CSO Census of Population 2011 & 2016

Table 3. Total Employed in Enterprise Ireland, IDA Ireland supported Firms, 2011 & 2016

		2011	2016	Change 2011-2016	% Change
Foreign Owned	Cavan	1,420	1,484	64	+5%
Irish Owned	Cavan	4,024	4,940	916	+23%
Total	Cavan	5,444	6,424	980	+18%

Source: DJEI/Forfás Annual Employment Survey

Table 4. Local Enterprise Office supported Employment, 2016

	Total Employment	Change in Employment 2015-2016	% Change in Employment 2015-2016
Cavan	1,162	107	+10%

Source: Local Enterprise Offices Annual Employment Survey 2016

Clare

Table 1. Total at Work, 2011 & 2016

	2011	2016	Change 2011-2016	% Change
Clare	45,606	49,511	3,905	+9%

Source: CSO Census of Population 2011 & 2016

Table 2. Unemployed, 2011 & 2016

	2011	2016	Change 2011-2016	% Change
Clare	10,542	7,018	-3,524	-33%

Source: CSO Census of Population 2011 & 2016

Table 3. Total Employed in Enterprise Ireland, IDA Ireland and Údarás supported Firms, 2011 & 2016

		2011	2016	Change 2011-2016	% Change
Foreign Owned	Clare	6,635	6,457	-178	-3%
Irish Owned	Clare	2,600	3,649	1,049	+40%
Total	Clare	9,235	10,106	871	+9%

Source: DJEI/Forfás Annual Employment Survey

Table 4. Local Enterprise Office supported Employment, 2016

	Total Employment	Change in Employment 2015-2016	% Change in Employment 2015-2016
Clare	1,110	173	+19%

Source: Local Enterprise Offices Annual Employment Survey 2016

Cork

Table 1. Total at Work, 2011 & 2016

	2011	2016	Change 2011-2016	% Change
Cork County	164,441	179,890	15,449	+9%
Cork City	43,062	50,483	7,421	+17%

Source: CSO Census of Population 2011 & 2016

Table 2. Unemployed, 2011 & 2016

	2011	2016	Change 2011-2016	% Change
Cork City	12,266	8,943	-3,323	-27%
Cork County	28,603	18,287	-10,316	-36%

Source: CSO Census of Population 2011 & 2016

Table 3. Total Employed in Enterprise Ireland, IDA Ireland and Údarás supported Firms, 2011 & 2016

		2011	2016	Change 2011-2016	% Change
Foreign Owned	Cork	26,240	34,989	8,749	+33%
Irish Owned	Cork	18,263	24,610	6,347	+35%
Total	Cork	44,503	59,599	15,096	+34%

Source: DJEI/Forfás Annual Employment Survey

Table 4. Local Enterprise Office supported Employment, 2016

	Total Employment	Change in Employment 2015- 2016	% Change in Employment
Cork City	633	123	+24%
Cork South	977	142	+17%
Cork West/North	1,393	155	+13%

Source: Local Enterprise Offices Annual Employment Survey 2016

Donegal

Table 1. Total at Work, 2011 & 2016

	2011	2016	Change 2011-2016	% Change
Donegal	53,277	58,353	5,076	+10%

Source: CSO Census of Population 2011 & 2016

Table 2. Unemployed, 2011 & 2016

	2011	2016	Change 2011-2016	% Change
Donegal	18,869	12,829	-6,040	-32%

Source: CSO Census of Population 2011 & 2016

Table 3. Total Employed in Enterprise Ireland, IDA Ireland and Údarás supported Firms, 2011 & 2016

		2011	2016	Change 2011-2016	% Change
Foreign Owned	Donegal	2,518	3,665	1,147	+46%
Irish Owned	Donegal	4,891	5,201	310	+6%
Total	Donegal	7,409	8,866	1,457	+20%

Source: DJEI/Forfás Annual Employment Survey

Table 4. Local Enterprise Office supported Employment, 2015-2016

	Total Employment	Change in Employment 2015- 2016	% Change in Employment 2015-2016
Donegal	1,358	250	+23%

Source: Local Enterprise Offices Annual Employment Survey 2016

Dublin

Table 1. Total at Work, 2011 & 2016

	2011	2016	Change 2011-2016	% Change
Dublin City	227,429	265,670	38,241	+17%
Dún Laoghaire- Rathdown	87,490	95,925	8,435	+10%
Fingal	119,276	133,971	14,695	+12%
South Dublin	106,534	119,210	12,676	+12%

Source: CSO Census of Population 2011 & 2016

Table 2. Unemployed, 2011 & 2016

	2011	2016	Change 2011-2016	% Change
Dublin City	51,699	39,200	-12,499	-24%
Dún Laoghaire- Rathdown	11,071	7,716	-3,355	-30%
Fingal	22,640	15,415	-7,225	-32%
South Dublin	26,039	18,265	-7,774	-30%

Source: CSO Census of Population 2011 & 2016

Table 3. Total Employed in Enterprise Ireland, IDA Ireland supported Firms, 2011 & 2016

		2011	2016	Change 2011-2016	% Change
Foreign Owned	Dublin	62,555	83,486	20,931	+33%
Irish Owned	Dublin	51,630	68,725	17,095	+33%
Total	Dublin	114,185	152,211	38,026	+33%

Source: DJEI/Forfás Annual Employment Survey

Table 4. Local Enterprise Office supported Employment, 2016

	Total Employment	Change in Employment 2015-2016	% Change in Employment 2015-2016
Dublin City	1,670	285	+21%
Dublin DLR	1,308	166	+15%
Dublin Fingal	831	140	+20%
Dublin South	1,230	123	+11%

Source: Local Enterprise Offices Annual Employment Survey 2016

Galway

Table 1. Total at Work, 2011 & 2016

	2011	2016	Change 2011-2016	% Change
Galway County	69,207	75,116	5,909	+9%
Galway City	31,557	34,951	3,394	+11%

Source: CSO Census of Population 2011 & 2016

Table 2. Unemployed, 2011 & 2016

	2011	2016	Change 2011-2016	% Change
Galway County	15,311	9,938	-5,373	-35%
Galway City	7,234	5,175	-2,059	-28%

Source: CSO Census of Population 2011 & 2016

Table 3. Total Employed in Enterprise Ireland, IDA Ireland and Údarás supported Firms, 2011 & 2016

		2011	2016	Change 2011-2016	% Change
Foreign Owned	Galway	12,679	16,012	3,333	+26%
Irish Owned	Galway	9,083	11,325	2,242	+25%
Total	Galway	21,762	27,337	5,575	+26%

Source: DJEI/Forfás Annual Employment Survey

Table 4. Local Enterprise Office supported Employment, 2015-2016

	Total Employment	Change in Employment 2015-2016	% Change in Employment 2015-'16
Galway County/City	962	79	+9%

Source: Local Enterprise Offices Annual Employment Survey 2016

Kerry

Table 1. Total at Work, 2011 & 2016

	2011	2016	Change 2011-2016	% Change
Kerry	55,767	61,222	5,455	+10%

Source: CSO Census of Population 2011 & 2016

Table 2. Unemployed, 2011 & 2016

	2011	2016	Change 2011-2016	% Change
Kerry	13,519	8,701	-4,818	-36%

Source: CSO Census of Population 2011 & 2016

Table 3. Total Employed in Enterprise Ireland, IDA Ireland and Údarás supported Firms, 2011 & 2016

		2011	2016	Change 2011-2016	% Change
Foreign Owned	Kerry	1,602	2,156	554	+35%
Irish Owned	Kerry	4,481	5,368	887	+20%
Total	Kerry	6,083	7,524	1,441	+24%

Source: DJEI/Forfás Annual Employment Survey

Table 4. Local Enterprise Office supported Employment, 2015-2016

	Total Employment	Change in Employment 2015-2016	% Change in Employment 2015-'16
Kerry	1,962	82	+4%

Source: Local Enterprise Offices Annual Employment Survey 2016

Kildare

Table 1. Total at Work, 2011 & 2016

	2011	2016	Change 2011-2016	% Change
Kildare	85,587	95,947	10,360	+12%

Source: CSO Census of Population 2011 & 2016

Table 2. Unemployed, 2011 & 2016

	2011	2016	Change 2011-2016	% Change
Kildare	18,639	12,297	-6,342	-34%

Source: CSO Census of Population 2011 & 2016

Table 3. Total Employed in Enterprise Ireland, IDA Ireland supported Firms, 2011 & 2016

		2011	2016	Change 2011-2016	% Change
Foreign Owned	Kildare	10,951	10,761	-190	-2%
Irish Owned	Kildare	5,418	8,015	2,597	+48%
Total	Kildare	16,369	18,776	2,407	+15%

Source: DJEI/Forfás Annual Employment Survey

Table 4. Local Enterprise Office supported Employment, 2015-2016

	Total Employment	Change in Employment 2015-2016	% Change in Employment 2015-'16
Kildare	881	115	+15%

Source: Local Enterprise Offices Annual Employment Survey 2016

Kilkenny

Table 1. Total at Work, 2011 & 2016

	2011	2016	Change 2011-2016	% Change
Kilkenny	37,273	41,363	4,090	+11%

Source: CSO Census of Population 2011 & 2016

Table 2. Unemployed, 2011 & 2016

	2011	2016	Change 2011-2016	% Change
Kilkenny	8,992	6,044	-2,948	-33%

Source: CSO Census of Population 2011 & 2016

Table 3. Total Employed in Enterprise Ireland, IDA Ireland supported Firms, 2011 & 2016

		2011	2016	Change 2011-2016	% Change
Foreign Owned	Kilkenny	501	1,796	1,295	258%
Irish Owned	Kilkenny	3,293	4,169	876	27%
Total	Kilkenny	3,794	5,965	2,171	57%

Source: DJEI/Forfás Annual Employment Survey

Table 4. Local Enterprise Office supported Employment, 2015-2016

	Total Employment	Change in Employment 2015-2016	% Change in Employment 2015-'16
Kilkenny	1,500	222	+17%

Source: Local Enterprise Offices Annual Employment Survey 2016

Laois

Table 1. Total at Work, 2011 & 2016

	2011	2016	Change 2011-2016	% Change
Laois	30,337	33,541	3,204	+11%

Source: CSO Census of Population 2011 & 2016

Table 2. Unemployed, 2011 & 2016

	2011	2016	Change 2011-2016	% Change
Laois	8,260	6,068	-2,192	-27%

Source: CSO Census of Population 2011 & 2016

Table 3. Total Employed in Enterprise Ireland and IDA Ireland supported Firms, 2011 & 2016

		2011	2016	Change 2011-2016	% Change
Foreign Owned	Laois	123	63	-60	-49%
Irish Owned	Laois	1,165	1,435	270	+23%
Total	Laois	1,288	1,498	210	+16%

Source: DJEI/Forfás Annual Employment Survey

Table 4. Local Enterprise Office supported Employment, 2015-2016

	Total Employment	Change in Employment 2015-2016	% Change in Employment 2015-'16
Laois	485	37	+8%

Source: Local Enterprise Offices Annual Employment Survey 2016

Leitrim

Table 1. Total at Work, 2011 & 2016

	2011	2016	Change 2011-2016	% Change
Leitrim	11,972	12,728	756	+6%

Source: CSO Census of Population 2011 & 2016

Table 2. Unemployed, 2011 & 2016

	2011	2016	Change 2011-2016	% Change
Leitrim	3,047	2,163	-884	-29%

Source: CSO Census of Population 2011 & 2016

Table 3. Total Employed in Enterprise Ireland, IDA Ireland supported Firms, 2011 & 2016

		2011	2016	Change 2011-2016	% Change
Foreign Owned	Leitrim	1,046	562	-484	-46%
Irish Owned	Leitrim	421	773	352	84%
Total	Leitrim	1,467	1,335	-132	-9%

Source: DJEI/Forfás Annual Employment Survey

Table 4. Local Enterprise Office supported Employment, 2015-2016

	Total Employment	Change in Employment 2015-2016	% Change in Employment 2015-'16
Leitrim	422	44	+12%

Source: Local Enterprise Offices Annual Employment Survey 2016

Limerick

Table 1. Total at Work, 2011 & 2016

	2011	2016	Change 2011-2016	% Change
Limerick City and County	71,041	77,185	6,144	+9%

Source: CSO Census of Population 2011 & 2016

Table 2. Unemployed, 2011 & 2016

	2011	2016	Change 2011-2016	% Change
Limerick City and County	18,537	12,935	-5,602	-30%

Source: CSO Census of Population 2011 & 2016

Table 3. Total Employed in Enterprise Ireland, IDA Ireland supported Firms, 2011 & 2016

		2011	2016	Change 2011-2016	% Change
Foreign Owned	Limerick	7,248	10,734	3,486	+48%
Irish Owned	Limerick	5,931	7,371	1,440	+24%
Total	Limerick	13,179	18,105	4,926	+37%

Source: DJEI/Forfás Annual Employment Survey

Table 4. Local Enterprise Office supported Employment, 2015-2016

	Total Employment	Change in Employment 2015-2016	% Change in Employment 2015-'16
Limerick	1,856	125	+7%

Source: Local Enterprise Offices Annual Employment Survey 2016

Longford

Table 1. Total at Work, 2011 & 2016

	2011	2016	Change 2011-2016	% Change
Longford	13,871	15,172	1,301	+9%

Source: CSO Census of Population 2011 & 2016

Table 2. Unemployed, 2011 & 2016

	2011	2016	Change 2011-2016	% Change
Longford	4,562	3,701	-861	-19%

Source: CSO Census of Population 2011 & 2016

Table 3. Total Employed in Enterprise Ireland, IDA Ireland supported Firms, 2011 & 2016

		2011	2016	Change 2011-2016	% Change
Foreign Owned	Longford	829	873	44	+5%
Irish Owned	Longford	1,647	2,678	1,031	+63%
Total	Longford	2,476	3,551	1,075	+43%

Source: DJEI/Forfás Annual Employment Survey

Table 4. Local Enterprise Office supported Employment, 2015-2016

	Total Employment	Change in Employment 2015-2016	% Change in Employment 2015-'16
Longford	1,061	102	+11%

Source: Local Enterprise Offices Annual Employment Survey 2016

Louth

Table 1. Total at Work, 2011 & 2016

	2011	2016	Change 2011-2016	% Change
Louth	44,232	50,317	6,085	+14%

Source: CSO Census of Population 2011 & 2016

Table 2. Unemployed, 2011 & 2016

	2011	2016	Change 2011-2016	% Change
Louth	13,792	10,058	-3,734	-27%

Source: CSO Census of Population 2011 & 2016

Table 3. Total Employed in Enterprise Ireland, IDA Ireland supported Firms, 2011 & 2016

		2011	2016	Change 2011-2016	% Change
Foreign Owned	Louth	2,296	3,971	1,675	+73%
Irish Owned	Louth	4,684	5,634	950	+20%
Total	Louth	6,980	9,605	2,625	+38%

Source: DJEI/Forfás Annual Employment Survey

Table 4. Local Enterprise Office supported Employment, 2015-2016

	Total Employment	Change in Employment 2015-2016	% Change in Employment 2015- '16
Louth	780	83	+12%

Source: Local Enterprise Offices Annual Employment Survey 2016

Mayo

Table 1. Total at Work, 2011 & 2016

	2011	2016	Change 2011-2016	% Change
Mayo	49,076	51,439	2,363	+5%

Source: CSO Census of Population 2011 & 2016

Table 2. Unemployed, 2011 & 2016

	2011	2016	Change 2011-2016	% Change
Mayo	11,866	8,591	-3,275	-28%

Source: CSO Census of Population 2011 & 2016

Table 3. Total Employed in Enterprise Ireland, IDA Ireland and Údarás supported Firms, 2011 & 2016

		2011	2016	Change 2011-2016	% Change
Foreign Owned	Mayo	3,517	4,238	721	+21%
Irish Owned	Mayo	4,391	4,644	253	+6%
Total	Mayo	7,908	8,882	974	+12%

Source: DJEI/Forfás Annual Employment Survey

Table 4. Local Enterprise Office supported Employment, 2015-2016

	Total Employment	Change in Employment 2015-2016	% Change in Employment 2015-'16
Mayo	1,239	116	+10%

Source: Local Enterprise Offices Annual Employment Survey 2016

Meath

Table 1. Total at Work, 2011 & 2016

	2011	2016	Change 2011-2016	% Change
Meath	74,342	83,259	8,917	+12%

Source: CSO Census of Population 2011 & 2016

Table 2. Unemployed, 2011 & 2016

	2011	2016	Change 2011-2016	% Change
Meath	16,292	10,523	-5,769	-35%

Source: CSO Census of Population 2011 & 2016

Table 3. Total Employed in Enterprise Ireland, IDA Ireland and Údarás supported Firms, 2011 & 2016

		2011	2016	Change 2011-2016	% Change
Foreign Owned	Meath	1,653	1,753	100	6%
Irish Owned	Meath	4,945	6,979	2,034	41%
Total	Meath	6,598	8,732	2,134	+32%

Source: DJEI/Forfás Annual Employment Survey

Table 4. Local Enterprise Office supported Employment, 2015-2016

	Total Employment	Change in Employment 2015-2016	% Change in Employment 2015- '16
Meath	927	85	+10%

Source: Local Enterprise Offices Annual Employment Survey 2016

Monaghan

Table 1. Total at Work, 2011 & 2016

	2011	2016	Change 2011-2016	% Change
Monaghan	23,005	25,549	2,544	11%

Source: CSO Census of Population 2011 & 2016

Table 2. Unemployed, 2011 & 2016

	2011	2016	Change 2011-2016	% Change
Monaghan	5,982	3,831	-2,151	-36%

Source: CSO Census of Population 2011 & 2016

Table 3. Total Employed in Enterprise Ireland, IDA Ireland supported Firms, 2011 & 2016

		2011	2016	Change 2011-2016	% Change
Foreign Owned	Monaghan	378	137	-241	-64%
Irish Owned	Monaghan	3,955	5,102	1,147	29%
Total	Monaghan	4,333	5,239	906	21%

Source: DJEI/Forfás Annual Employment Survey

Table 4. Local Enterprise Office supported Employment, 2015-2016

	Total Employment	Change in Employment 2015-2016	% Change in Employment 2015-'16
Monaghan	903	129	+17%

Source: Local Enterprise Offices Annual Employment Survey 2016

Offaly

Table 1. Total at Work, 2011 & 2016

	2011	2016	Change 2011-2016	% Change
Offaly	27,536	30,287	2,751	10%

Source: CSO Census of Population 2011 & 2016

Table 2. Unemployed, 2011 & 2016

	2011	2016	Change 2011-2016	% Change
Offaly	8,313	5,744	-2,569	-31%

Source: CSO Census of Population 2011 & 2016

Table 3. Total Employed in Enterprise Ireland, IDA Ireland supported Firms, 2011 & 2016

		2011	2016	Change 2011-2016	% Change
Foreign Owned	Offaly	972	1,088	116	12%
Irish Owned	Offaly	3,016	3,782	766	25%
Total	Offaly	3,988	4,870	882	22%

Source: DJEI/Forfás Annual Employment Survey

Table 4. Local Enterprise Office supported Employment, 2015-2016

	Total Employment	Change in Employment 2015-2016	% Change in Employment 2015-'16
Offaly	921	82	+10%

Source: Local Enterprise Offices Annual Employment Survey 2016

Roscommon

Table 1. Total at Work, 2011 & 2016

	2011	2016	Change 2011-2016	% Change
Roscommon	24,390	25,819	1,429	6%

Source: CSO Census of Population 2011 & 2016

Table 2. Unemployed, 2011 & 2016

	2011	2016	Change 2011-2016	% Change
Roscommon	5,856	3,847	-2,009	-34%

Source: CSO Census of Population 2011 & 2016

Table 3. Total Employed in Enterprise Ireland, IDA Ireland supported Firms, 2011 & 2016

		2011	2016	Change 2011-2016	% Change
Foreign Owned	Roscommon	838	944	106	13%
Irish Owned	Roscommon	1,327	1,729	402	30%
Total	Roscommon	2,165	2,673	508	23%

Source: DJEI/Forfás Annual Employment Survey

Table 4. Local Enterprise Office supported Employment, 2015-2016

	Total Employment	Change in Employment 2015-2016	% Change in Employment 2015- '16
Roscommon	704	40	+6%

Source: Local Enterprise Offices Annual Employment Survey 2016

Sligo

Table 1. Total at Work, 2011 & 2016

	2011	2016	Change 2011-2016	% Change
Sligo	25,434	26,002	568	2%

Source: CSO Census of Population 2011 & 2016

Table 2. Unemployed, 2011 & 2016

	2011	2016	Change 2011-2016	% Change
Sligo	5,624	4,250	-1,374	-24%

Source: CSO Census of Population 2011 & 2016

Table 3. Total Employed in Enterprise Ireland, IDA Ireland supported Firms, 2011 & 2016

		2011	2016	Change 2011-2016	% Change
Foreign Owned	Sligo	2,395	2,207	-188	-8%
Irish Owned	Sligo	1,441	1,620	179	12%
Total	Sligo	3,836	3,827	-9	0%

Source: DJEI/Forfás Annual Employment Survey

Table 4. Local Enterprise Office supported Employment, 2015-2016

	Total Employment	Change in Employment 2015-2016	% Change in Employment 2015-'16
Sligo	1,095	38	+4%

Source: Local Enterprise Offices Annual Employment Survey 2016

Tipperary

Table 1. Total at Work, 2011 & 2016

	2011	2016	Change 2011-2016	% Change
Tipperary	60,332	63,472	3,140	5%

Source: CSO Census of Population 2011 & 2016

Table 2. Unemployed, 2011 & 2016

	2011	2016	Change 2011-2016	% Change
Tipperary	14,996	10,867	-4,129	-28%

Source: CSO Census of Population 2011 & 2016

Table 3. Total Employed in Enterprise Ireland, IDA Ireland supported Firms, 2011 & 2016

		2011	2016	Change 2011-2016	% Change
Foreign Owned	Tipperary	3,979	3,584	-395	-10%
Irish Owned	Tipperary	4,762	5,140	378	8%
Total	Tipperary	8,741	8,724	-17	0%

Source: DJEI/Forfás Annual Employment Survey

Table 4. Local Enterprise Office supported Employment, 2015-2016

	Total Employment	Change in Employment 2015-2016	% Change in Employment 2015-'16
Tipperary	1,437	119	+9%

Source: Local Enterprise Offices Annual Employment Survey 2016

Waterford

Table 1. Total at Work, 2011 & 2016

	2011	2016	Change 2011-2016	% Change
Waterford City and County	41,942	45,595	3,653	+9%

Source: CSO Census of Population 2011 & 2016

Table 2. Unemployed, 2011 & 2016

	2011	2016	Change 2011-2016	% Change
Waterford City and County	11,572	8,323	-3,249	-28%

Source: CSO Census of Population 2011 & 2016

Table 3. Total Employed in Enterprise Ireland, IDA Ireland and Údarás supported Firms, 2011 & 2016

		2011	2016	Change 2011-2016	% Change
Foreign Owned	Waterford	5,283	6,079	796	+15%
Irish Owned	Waterford	4,814	5,913	1,099	+23%
Total	Waterford	10,097	11,992	1,895	+19%

Source: DJEI/Forfás Annual Employment Survey

Table 4. Local Enterprise Office supported Employment, 2015-2016

	Total Employment	Change in Employment 2015-2016	% Change in Employment 2015-'16
Waterford	1,469	121	+9%

Source: Local Enterprise Offices Annual Employment Survey 2016

Westmeath

Table 1. Total at Work, 2011 & 2016

	2011	2016	Change 2011-2016	% Change
Westmeath	32,319	35,289	2,970	9%

Source: CSO Census of Population 2011 & 2016

Table 2. Unemployed, 2011 & 2016

	2011	2016	Change 2011-2016	% Change
Westmeath	8,637	6,666	-1,971	-23%

Source: CSO Census of Population 2011 & 2016

Table 3. Total Employed in Enterprise Ireland, IDA Ireland supported Firms, 2011 & 2016

		2011	2016	Change 2011-2016	% Change
Foreign Owned	Westmeath	2,343	2,767	424	18%
Irish Owned	Westmeath	2,557	3,457	900	35%
Total	Westmeath	4,900	6,224	1,324	27%

Source: DJEI/Forfás Annual Employment Survey

Table 4. Local Enterprise Office supported Employment, 2015-2016

	Total Employment	Change in Employment 2015-2016	% Change in Employment 2015-'16
Westmeath	1,375	106	+8%

Source: Local Enterprise Offices Annual Employment Survey 2016

Wexford

Table 1. Total at Work, 2011 & 2016

	2011	2016	Change 2011-2016	% Change
Wexford	51,307	57,759	6,452	13%

Source: CSO Census of Population 2011 & 2016

Table 2. Unemployed, 2011 & 2016

	2011	2016	Change 2011-2016	% Change
Wexford	16,170	11,478	-4,692	-29%

Source: CSO Census of Population 2011 & 2016

Table 3. Total Employed in Enterprise Ireland, IDA Ireland and Údarás supported Firms, 2011 & 2016

		2011	2016	Change 2011-2016	% Change
Foreign Owned	Wexford	2,566	3,013	447	17%
Irish Owned	Wexford	4,102	4,434	332	8%
Total	Wexford	6,668	7,447	779	12%

Source: DJEI/Forfás Annual Employment Survey

Table 4. Local Enterprise Office supported Employment, 2015-2016

	Total Employment	Change in Employment 2015-2016	% Change in Employment 2015-'16
Wexford	1,192	103	+9%

Source: Local Enterprise Offices Annual Employment Survey 2016

Wicklow

Table 1. Total at Work, 2011 & 2016

	2011	2016	Change 2011-2016	% Change
Wicklow	52,907	59,134	6,227	12%

Source: CSO Census of Population 2011 & 2016

Table 2. Unemployed, 2011 & 2016

	2011	2016	Change 2011-2016	% Change
Wicklow	12,674	8,603	-4,071	-32%

Source: CSO Census of Population 2011 & 2016

Table 3. Total Employed in Enterprise Ireland, IDA Ireland supported Firms, 2011 & 2016

		2011	2016	Change 2011-2016	% Change
Foreign Owned	Wicklow	2,059	1,855	-204	-10%
Irish Owned	Wicklow	3,557	4,059	502	14%
Total	Wicklow	5,616	5,914	298	5%

Source: DJEI/Forfás Annual Employment Survey

Table 4. Local Enterprise Office supported Employment, 2015-2016

	Total Employment	Change in Employment 2015-2016	% Change in Employment 2015-'16
Wicklow	699	124	+22%

Source: Local Enterprise Offices Annual Employment Survey 2016

Appendix 1. Summary Tables of Employment and Unemployment by County

Table 1. Total at Work by Principal Economic Status, CSO Census 2011 & 2016

	2011	2016	Change 2011-2016	% Change
Carlow	19,502	21,973	2,471	13%
Cavan	27,309	30,509	3,200	12%
Clare	45,606	49,511	3,905	9%
Cork County	164,441	179,890	15,449	9%
Cork City	43,062	50,483	7,421	17%
Donegal	53,277	58,353	5,076	10%
Dublin City	227,429	265,670	38,241	17%
Dún Laoghaire- Rathdown	87,490	95,925	8,435	10%
Fingal	119,276	133,971	14,695	12%
South Dublin	106,534	119,210	12,676	12%
Galway County	69,207	75,116	5,909	9%
Galway City	31,557	34,951	3,394	11%
Kerry	55,767	61,222	5,455	10%
Kildare	85,587	95,947	10,360	12%
Kilkenny	37,273	41,363	4,090	11%
Laois	30,337	33,541	3,204	11%
Leitrim	11,972	12,728	756	6%
Limerick City and County	71,041	77,185	6,144	9%
Longford	13,871	15,172	1,301	9%
Louth	44,232	50,317	6,085	14%

Mayo	49,076	51,439	2,363	5%
Meath	74,342	83,259	8,917	12%
Monaghan	23,005	25,549	2,544	11%
Offaly	27,536	30,287	2,751	10%
Roscommon	24,390	25,819	1,429	6%
Sligo	25,434	26,002	568	2%
Tipperary	60,332	63,472	3,140	5%
Waterford City and County	41,942	45,595	3,653	9%
Westmeath	32,319	35,289	2,970	9%
Wexford	51,307	57,759	6,452	13%
Wicklow	52,907	59,134	6,227	12%
State	180,7360	2,006,641	199,281	11%

Table 2. Unemployed, 2011 & 2016

	2011	2016	Change 2011-2016	% Change 2011-2016
Carlow	5,908	4,507	-1,401	-24%
Cavan	7,331	5,413	-1,918	-26%
Clare	10,542	7,018	-3,524	-33%
Cork City	12,266	8,943	-3,323	-27%
Cork County	28,603	18,287	-10,316	-36%
Donegal	18,869	12,829	-6,040	-32%
Dublin City	51,699	39,200	-12,499	-24%
Dún Laoghaire- Rathdown	11,071	7,716	-3,355	-30%
Fingal	22,640	15,415	-7,225	-32%
South Dublin	26,039	18,265	-7,774	-30%
Galway County	15,311	9,938	-5,373	-35%
Galway City	7,234	5,175	-2,059	-28%
Kerry	13,519	8,701	-4,818	-36%
Kildare	18,639	12,297	-6,342	-34%
Kilkenny	8,992	6,044	-2,948	-33%
Laois	8,260	6,068	-2,192	-27%
Leitrim	3,047	2,163	-884	-29%
Limerick City and County	18,537	12,935	-5,602	-30%
Longford	4,562	3,701	-861	-19%
Louth	13,792	10,058	-3,734	-27%
Mayo	11,866	8,591	-3,275	-28%
Meath	16,292	10,523	-5,769	-35%
Monaghan	5,982	3,831	-2,151	-36%
Offaly	8,313	5,744	-2,569	-31%

Roscommon	5,856	3,847	-2,009	-34%
Sligo	5,624	4,250	-1,374	-24%
Tipperary	14,996	10,867	-4,129	-28%
Waterford City and County	11,572	8,323	-3,249	-28%
Westmeath	8,637	6,666	-1,971	-23%
Wexford	16,170	11,478	-4,692	-29%
Wicklow	12,674	8,603	-4,071	-32%
State	424,843	297,396	-127,447	-30%

Source: CSO 2011 and 2016 Census of Population. Includes those 'having given up or lost previous Job' or 'looking for first job'

Table 3. Total Employed in Enterprise Ireland, IDA Ireland and Údarás supported Firms, 2011 & 2016

		2011	2016	Change 2011-2016	% Change
Foreign Owned	Carlow	514	802	288	56%
Irish Owned	Carlow	2,702	2,813	111	4%
Total	Carlow	3,216	3,615	399	12%
Foreign Owned	Cavan	1,420	1,484	64	5%
Irish Owned	Cavan	4,024	4,940	916	23%
Total	Cavan	5,444	6,424	980	18%
Foreign Owned	Clare	6,635	6,457	-178	-3%
Irish Owned	Clare	2,600	3,649	1,049	40%
Total	Clare	9,235	10,106	871	9%
Foreign Owned	Cork	26,240	34,989	8,749	33%
Irish Owned	Cork	18,263	24,610	6,347	35%
Total	Cork	44,503	59,599	15,096	34%
Foreign Owned	Donegal	2,518	3,665	1,147	46%
Irish Owned	Donegal	4,891	5,201	310	6%
Total	Donegal	7,409	8,866	1,457	20%
Foreign Owned	Dublin	62,555	83,486	20,931	33%
Irish Owned	Dublin	51,630	68,725	17,095	33%
Total	Dublin	114,185	152,211	38,026	33%

Foreign Owned	Galway	12,679	16,012	3,333	26%
Irish Owned	Galway	9,083	11,325	2,242	25%
Total	Galway	21,762	27,337	5,575	26%
Foreign Owned	Kerry	1,602	2,156	554	35%
Irish Owned	Kerry	4,481	5,368	887	20%
Total	Kerry	6,083	7,524	1,441	24%
Foreign Owned	Kildare	10,951	10,761	-190	-2%
Irish Owned	Kildare	5,418	8,015	2,597	48%
Total	Kildare	16,369	18,776	2,407	15%
Foreign Owned	Kilkenny	501	1,796	1,295	258%
Irish Owned	Kilkenny	3,293	4,169	876	27%
Total	Kilkenny	3,794	5,965	2,171	57%
Foreign Owned	Laois	123	63	-60	-49%
Irish Owned	Laois	1,165	1,435	270	23%
Total	Laois	1,288	1,498	210	16%
Foreign Owned	Leitrim	1,046	562	-484	-46%
Irish Owned	Leitrim	421	773	352	84%
Total	Leitrim	1,467	1,335	-132	-9%
Foreign Owned	Limerick	7,248	10,734	3,486	48%
Irish Owned	Limerick	5,931	7,371	1,440	24%
Total	Limerick	13,179	18,105	4,926	37%

Foreign Owned	Longford	829	873	44	5%
Irish Owned	Longford	1,647	2,678	1,031	63%
Total	Longford	2,476	3,551	1,075	43%
Foreign Owned	Louth	2,296	3,971	1,675	73%
Irish Owned	Louth	4,684	5,634	950	20%
Total	Louth	6,980	9,605	2,625	38%
Foreign Owned	Mayo	3,517	4,238	721	21%
Irish Owned	Mayo	4,391	4,644	253	6%
Total	Mayo	7,908	8,882	974	12%
Foreign Owned	Meath	1,653	1,753	100	6%
Irish Owned	Meath	4,945	6,979	2,034	41%
Total	Meath	6,598	8,732	2,134	32%
Foreign Owned	Monaghan	378	137	-241	-64%
Irish Owned	Monaghan	3,955	5,102	1,147	29%
Total	Monaghan	4,333	5,239	906	21%
Foreign Owned	Offaly	972	1,088	116	12%
Irish Owned	Offaly	3,016	3,782	766	25%
Total	Offaly	3,988	4,870	882	22%
Foreign Owned	Roscommon	838	944	106	13%
Irish Owned	Roscommon	1,327	1,729	402	30%
Total	Roscommon	2,165	2,673	508	23%

Foreign Owned	Sligo	2,395	2,207	-188	-8%
Irish Owned	Sligo	1,441	1,620	179	12%
Total	Sligo	3,836	3,827	-9	0%
Foreign Owned	Tipperary	3,979	3,584	-395	-10%
Irish Owned	Tipperary	4,762	5,140	378	8%
Total	Tipperary	8,741	8,724	-17	0%
Foreign Owned	Waterford	5,283	6,079	796	15%
Irish Owned	Waterford	4,814	5,913	1,099	23%
Total	Waterford	10,097	11,992	1,895	19%
Foreign Owned	Westmeath	2,343	2,767	424	18%
Irish Owned	Westmeath	2,557	3,457	900	35%
Total	Westmeath	4,900	6,224	1,324	27%
Foreign Owned	Wexford	2,566	3,013	447	17%
Irish Owned	Wexford	4,102	4,434	332	8%
Total	Wexford	6,668	7,447	779	12%
Foreign Owned	Wicklow	2,059	1,855	-204	-10%
Irish Owned	Wicklow	3,557	4,059	502	14%
Total	Wicklow	5,616	5,914	298	5%

Table 4. Local Enterprise Office supported Employment, 2015-2016

	Total Employment	Change in Employment 2015-2016	% Change in Employment 2015-'16
Carlow	1,092	63	+6%
Cavan	1,162	107	+10%
Clare	1,110	173	+19%
Cork city	633	123	+24%
Cork South	977	142	+17%
Cork West/North	1,393	155	+13%
Donegal	1,358	250	+23%
Dublin City	1,670	285	+21%
Dublin DLR	1,308	166	+15%
Dublin Fingal	831	140	+20%
Dublin South	1,230	123	+11%
Galway County/City	962	79	+9%
Kerry	1,962	82	+4%
Kildare	881	115	+15%
Kilkenny	1,500	222	+17%
Laois	485	37	+8%
Leitrim	422	44	+12%
Limerick	1,856	125	+7%
Longford	1,061	102	+11%
Louth	780	83	+12%
Mayo	1,239	116	+10%
Meath	927	85	+10%
Monaghan	903	129	+17%
Offaly	921	82	+10%
Roscommon	704	40	+6%
Sligo	1,095	38	+4%
Tipperary	1,437	119	+9%
Waterford	1,469	121	+9%
Westmeath	1,375	106	+8%
Wexford	1,192	103	+9%
Wicklow	699	124	+22%
Total	34,634	3,679	+12%

Source: Local Enterprise Offices Annual Employment Survey 2016. Data relates to clients in the LEO portfolio at the end of 2016.

For further information contact:

Enterprise Surveys and Data Unit
Strategic Policy Division
Department of Business, Enterprise and Innovation
Kildare Street
Dublin 2

Email: matthew.mcdonagh@djei.ie

www.djei.ie